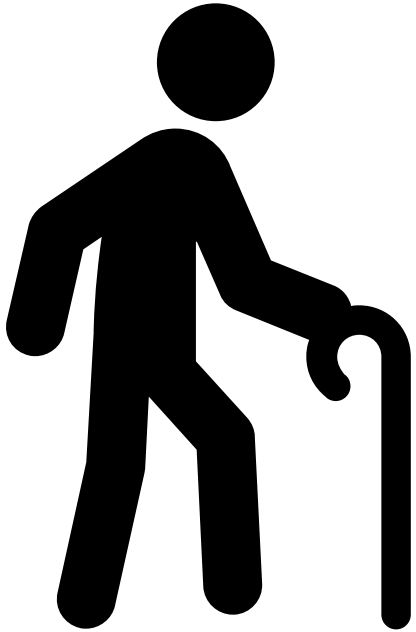


**TRIPLE KISSING BALLOON TECHNIQUE WITH DRUG COATED BALLOON FOR
LEFT MAIN TRIFURCATION DISEASE: A CASE REPORT.**

RATIONAL

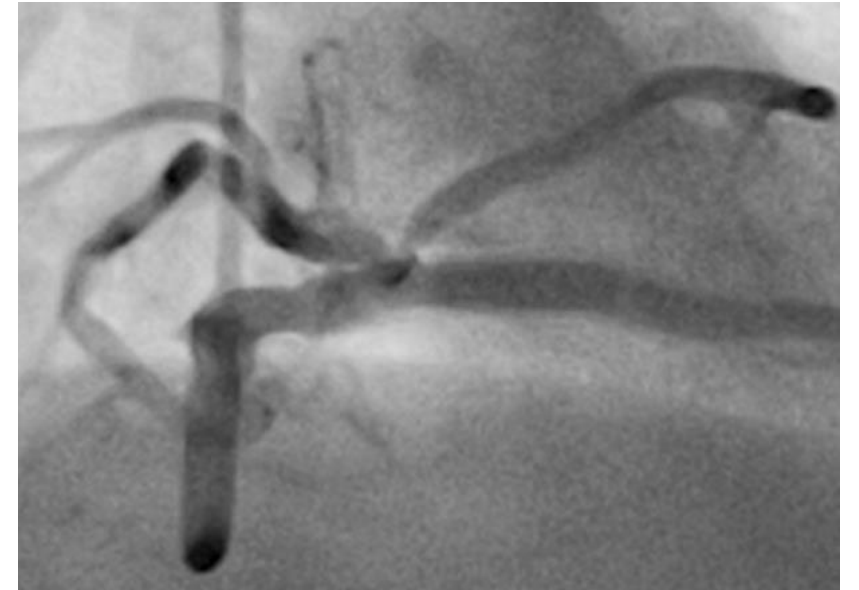
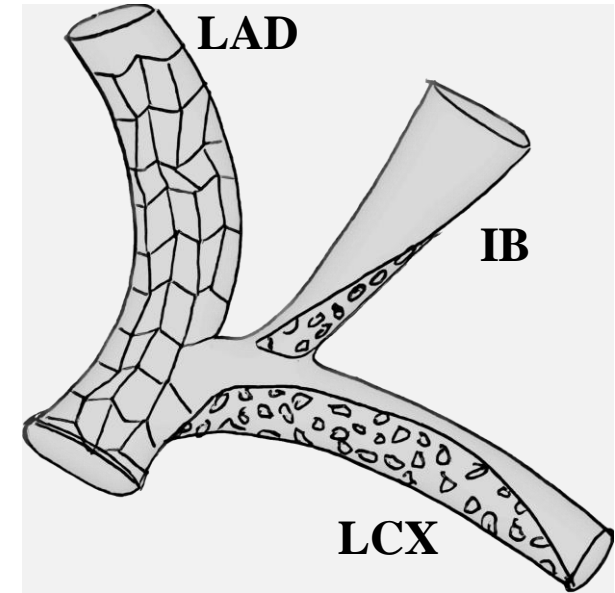
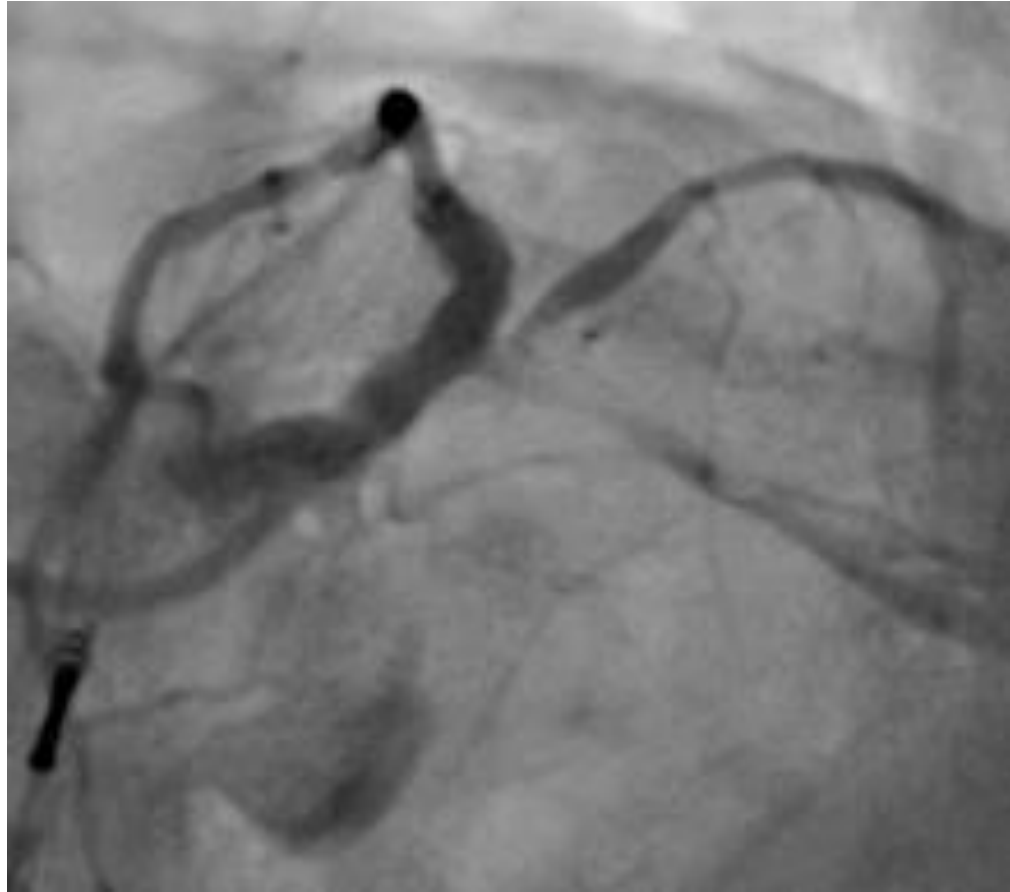


- 79 years old, male
- Admitted to cardiology department for acute myocardial infarction (N-STEMI).
- Previous coronary percutaneous revascularization (6 year before DES implantation in left main-anteriore descending and right coronary artery).
- ICD implantation in primary prevention.
- Ecocardiography at admission: hypokinetic ischemic cardiomyopathy with severe systolic dysfunction.

RATIONAL

Coronary angiography:

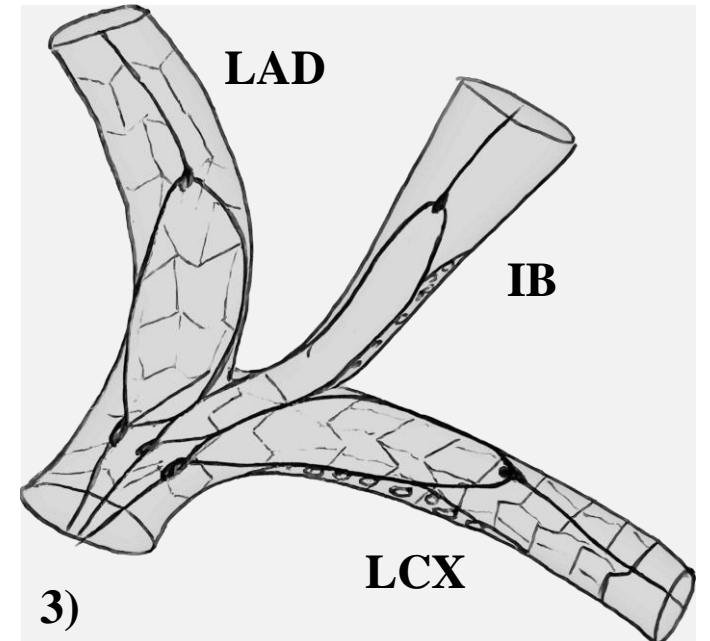
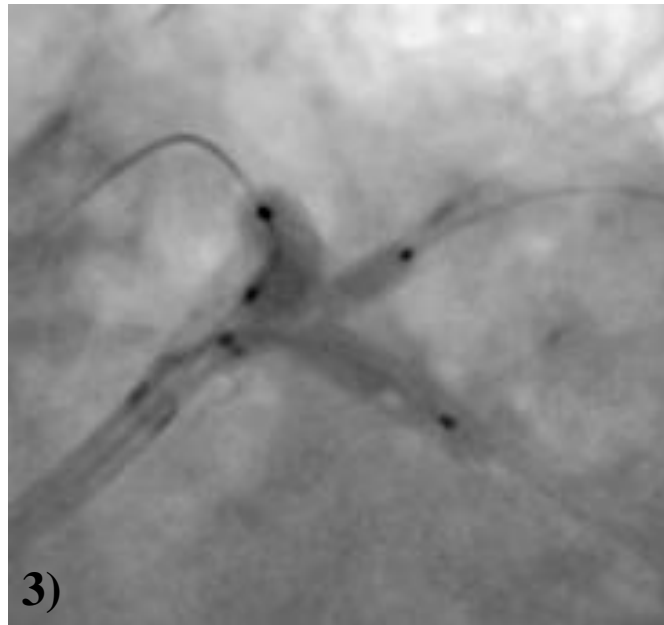
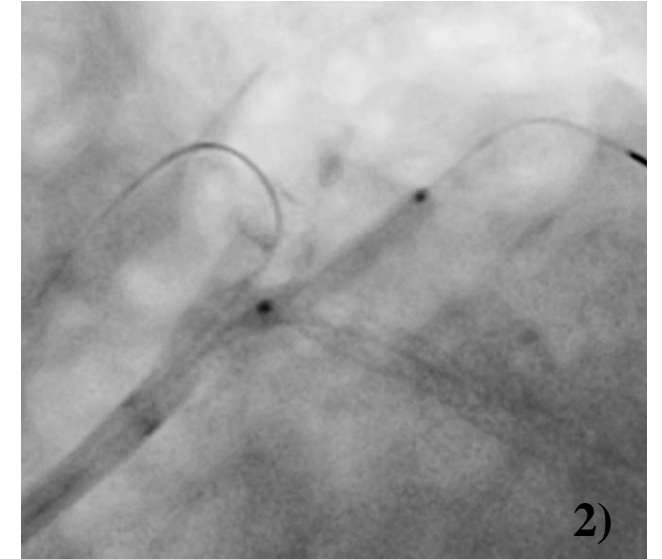
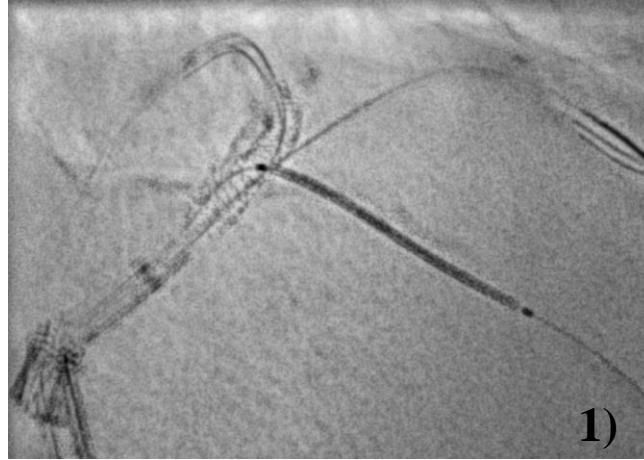
- Good result with patency of left main- anterior descending previous stenting;
- Circumflex artery (LCX) ostial and proximal sub-occlusion;
- Intermediate branch (IB) ostial significant lesion;
- In stent restenosis of previously implanted stent on right coronary artery.



TECHNICAL RESOLUTION

Left main angioplasty strategy:

- 7 Fr right femoral catheter, IABP by left femorale access.
- Guide-wires in LAD, IB e LCX.
- Predilation of LCX and Resolute Onyx 2,75x26 mm stent implantation in short overlap (reverse TAP) (panel 1).
- Re-wiring and pre-dilation of IB (panel 2).
- Inflation of DCB (Prevail, Medtronic) 2,25x15 mm for 50 secondi in IB, followed by 10 more inflation second with concomitant triple kissing (n.c. 3,5x15 mm for LAD and n..c. 2,75x15 mm for LCX) (panel 3)



CLINICAL IMPLICATIONS



- Good angiographic result with patency of left main-anterior descending, LCX and IB.
- At 1 year follow-up the patient was free from clinical events.

PERSPECTIVES

- The use of DCB in bifurcation lesions has not been widely investigated and is matter of ongoing and future trials.
- Triple kissing balloon has been proposed and investigated as possible technique in left main but need further validation.
- In a portion of left main trifurcation diseases, use of DCB together with triple kissing balloon could provide side branches patency without compromising coronary anatomy.